



Term 2 | Week 2 | 7 May 2019

Principal's Report

Welcome back

It's hard to believe that it is Term 2 already! I hope everyone had a relaxing break and spent some quality time with family and friends. Easter is always a busy time and it was great to get some lovely weather, which isn't always the case at Easter!

Staffing

As you all know Mr Fisher is currently on Long Service Leave and will be returning on Monday 27 May, Week 5. I will be Relieving Principal until then, Ms Phillips will be Relieving Deputy Principal and Mr McMullen will be relieving Assistant Principal for Stage 2. I know Ms Phillips and Mr McMullen have settled into their new roles and doing a fabulous job already.

Showcases

Stages have been busy organising and preparing for their Stage Showcases. Stage Showcases are a wonderful opportunity that encourages parents and carers to be a part of their child's learning. Students prepare work that they are extremely proud of and the showcases are often a highlight of the term for them. It was wonderful to see so many parents attend the Kindergarten Showcase last Friday. The budding little artists certainly were keen to show off their masterpieces! Tomorrow sees Stage 3 hold their Showcase, I know they have been busy creating dioramas ready for display. Stage 1 have been busy researching for their upcoming showcase next week, being held on Friday 17 May. Stage 2 will be holding their showcase towards the end of the term, with more details to come. Please come along and join in the learning journey of your child!

Data Days

This week will see all staff be a part of a Stage Data Day. These days play a vital role in staff analysing both pre and post data which has been collected over the term, to plan the where to next for all students in their learning journey. Although it means the students don't have their class teacher for the day, these days are so valuable in ensuring all students are making progress and identifying areas of need.

WOONONA PUBLIC SCHOOL
5A GRAY STREET
WOONONA NSW 2517
Ph: 4284 4316 | Fax: 4283 4216

email: woonona-p.school@det.nsw.edu.au

website: woonona-p.schools.nsw.gov.au

WASSUP

W O O N O N A



Upcoming Events

As many of you are aware, NAPLAN online begins next week for all students in Years 3 and 5. Please assure your children that it is an assessment of where they are at one point in time. It is not something that should define them or cause great anxiety.

It's already been a very busy start to the term, with many more exciting events coming up, so stay tuned for more details.

Enjoy your week!

Ms Alison Strinic

Kindergarten Showcase



On Friday, Kindergarten held their very first showcase. Parents and Grandparents were invited to a very special Art Gallery Exhibit showcasing what our students had learnt about portraits.

Students did an amazing job in showcasing what they had learnt and created. They were excitedly telling parents and visitors about artists they had learnt about such as

Leonardo Da Vinci and Vincent Van Gogh, listing materials they used to make artworks, explaining what a self-portrait is and explaining how they completed their self-portraits.

It was also wonderful for Kindergarten students to have a special visit from their Year 6 buddies.

Thank you to everyone who made this event so successful and most of all congratulations Kindergarten, you are all true artists!

See our school Facebook site for more photos!

Mrs Bleeker

WASSUP

W O O N O N A



Kindergarten Showcase



CO-OPERATION - RESPECT - EFFORT - RESPONSIBILITY

WASSUP

W O O N O N A



Easter Hat Parade

At the end of last term, we had our annual Easter Hat Parade which was a huge success. It was wonderful to see so many parents join us for this event and be part of celebrating all the wonderful hats our students had made.



Many of our younger students worked hard on their hats with the assistance of older students within our school. It was a great opportunity for students to work collaboratively and creatively in a fun and exciting way.

Kindergarten treated us to a very special item 'Little Peter Rabbit' and did a fantastic job in their performance. They looked very cute with their little cotton tails!

For our parade, 'Easter Bunny Headquarters' sent us a very special helper to lead our younger students. He was a very exciting addition to the infants and toddler parade.

This year our Easter raffle raised close to \$4,000!! This money will be used to purchase much needed playground equipment for our K-6 students to use at recess and lunch.

Events like this would not be possible without the support of our wonderful school community. Thank you to everyone who made a gold coin donation, donated an Easter egg, bought resources for Easter hats or bought & sold raffle tickets, your contribution was greatly appreciated.

Special thanks to the Kindergarten team for their wonderful organisation of this event.

Mrs Bleeker



WASSUP

W O O N O N A



Library News

Just a reminder that our annual Book Fair is on Wednesday 5 June and Thursday 6 June! Due to requests we will be running the Book Fair over 2 days.

Sean Williams will be visiting Stage 1 and Stage 2 on 12 June. Sean has written the very popular book "My Nanna Nellie Will Tour the Illawarra Tomorrow" which Stage 1 has been using as a base for their Geography for the past few years. Nanna Nellie is also a highly popular library book.

Details about Sean's visit will be sent home in the next few weeks.

Kindergarten and Stage 3 will have literary visits later in the year.

Mrs Julie Lake

Earn & Learn commenced Wednesday 1 May

With every \$10 spent at Woolworths, one sticker is collected. These can be placed onto the Earn & Learn sticker sheets and dropped into the collection box at Woonona Public School or your local Woolworths.

To help boost your sticker collection, look out for the range of participating products in store which will earn you double stickers.

Points earned are used to purchase equipment such as Arts & Crafts, Digital Technologies and Outdoor Equipment.



Please be aware that there are students in our school with allergies to nuts. We ask that you give consideration to voluntarily agreeing not to send nut products, in particular peanuts and peanut butter, to school.

P&C News

Hello Parents and Citizens of Woonona (how formal is that!!)

We are off into term 2 with lots of things to look forward to;

- The Mothers Day Stall, we know you love waking up to those Coles-Bag-hidden-presents that your child has sneakily or not so sneakily stored under their beds! Please see the attached flyer for details
- We don't usually discuss politics as a rule but we certainly know how to host a BBQ for Election Day, so join in if you can, it's loads of fun. Volunteers needed.
- This term also sees some exciting things changing with our new menu for the canteen, I mean who doesn't like a Burger on a Friday?! Please see the new menu attached to the newsletter

Please look out for our P&C Newsletter it has some exciting information on the New Playground and the upcoming Working Bees....

The Monthly P&C meeting is on Wednesday night and you are welcome to join us!

We are here for you, to listen to your ideas, and have fun together making our school a better place.



Can you help?

Election BBQ 18/5

On Saturday 18th of May, WPS are a polling place for the Federal Election which provides us with another great opportunity to raise some funds towards our P&C playground upgrades.

We will run a BBQ only, and it is always a fun day for volunteers.

If you can spare one hour or more to help out on 18/5, please add your name to the roster here <https://signup.com/go/rxjbNal>



Woonona Public School CANTEEN MENU TERM 2 2019

YOUR CANTEEN IS RUN ENTIRELY BY VOLUNTEERS

Themed Days

- **Baked Potato Monday \$4.00**
 - Ham & Cheese OR Mexican (meat-free)
- **Pizza Tuesday \$4.00**
 - Canteen-made
 - Ham & Pineapple OR Ham & Cheese
- **Super Sushi Wednesday**
 - Various flavours available
 - See QuickCliq for options and prices
- **Pizza Thursday \$4.00**
 - Canteen-made
 - Cheese OR BBQ Chicken
- **Burger Friday \$4.50**
 - Beef OR Chicken
 - Served with lettuce, tomato & cheese
 - Tomato or BBQ sauce optional

Order online...

www.quickcliq.com.au

It makes ordering lunches quick and easy!
NOTE: Cut off for orders is 9:00am on the day.

CANTEEN FOOD

Available over the counter and for ORDER

Fresh seasonal fruit - whole	\$0.70 each
Fresh fruit salad cup	\$2.00
Fresh fruit salad cup with yoghurt & granola	\$2.00
Fresh fruit salad cup with dairy-free yoghurt & granola	\$2.00
Frozen watermelon wedge	\$0.20
Toasties	\$0.50
- Bread with tomato paste & melted cheese	
Popcorn - Freshly air-popped	\$0.50
Cheerios in bag	\$0.50
Bread Sticks (grissini)	\$0.20

FRESHLY MADE TREATS

When available, over the counter ONLY

Freshly baked fruit muffins	\$1.00
Bliss Balls - 2 bliss balls for...	\$0.50
Other various canteen-made treats daily	

FROZEN TREATS

Available at lunch only, over the counter ONLY

Frozen watermelon wedge	\$0.20
Frozen fruit cups	\$0.20
- Frozen orange juice	
Large Fruit Cups	\$0.50
- apple & blackcurrent or apple	
Frozen Juicies	\$1.00
- Lemonade, Tropical, Wildberry or Orange	
Vanilla Ice Cream Cup	\$1.00

DRINKS

Available over the counter and for ORDER

Water 600ml	\$1.50
Flavoured Milk	\$2.00
- Chocolate or Strawberry	
Poppers (Juice Box)	\$1.50
Apple, Orange, Apple & Blackcurrent or Tropical	

Available over the counter ONLY

Warm or Cold Milo	\$1.00
-------------------	--------

LUNCH

Available everyday for lunch - ORDER ONLY

HOT FOOD

Chicken Chippies - 3 pack	\$1.50
Chicken Chippies - 5 pack	\$2.50
Chicken Wrap	\$3.50
Flame-grilled chicken breast tender	
Optional lettuce and mayonnaise	
Sausage Roll	\$3.00
Sauce - tomato or BBQ	\$0.20
Beef Lasagne (GF)	\$3.00
Vegetable Lasagne (GF)	\$3.00
Macaroni & Cheese (GF)	\$3.00
Twista Pasta Bolognaise	\$3.00

SANDWICHES - all made on wholemeal bread

Bread - Includes 2 slices	\$1.00
Roll	\$1.50
Wrap	\$1.50
Toasted (sandwich press)	\$0.50
With butter	\$0.00
Without butter	\$0.00

Fillings

Vegetemite	\$0.50
Honey	\$0.50
Cheese	\$1.00
Ham	\$1.00
Tuna	\$1.00
Chicken Flame Grilled Tender	\$1.50
Egg - boiled	\$1.00
Salad- choose 4 salad items	\$1.60
Lettuce	\$0.40
Cucumber	\$0.40
Carrot	\$0.40
Tomato	\$0.40
Beetroot	\$0.40
Mayonnaise	\$0.10



If you have any suggestions, ideas or you are able to volunteer please contact canteen admin at canteen@wppc.com.au. Please check the current roster regularly for any planned closures. This is sent weekly with the term planner or newsletter and is also on the Facebook parents page.

P&C Meeting - Wednesday 8th May

6:30pm in the Staff Room (enter via front office)

Please join us at our next P&C meeting. It's a great opportunity to gain some insight in to our school community and get involved. Hope to see some new faces this month.



AGENDA

Woonona Public School P&C Association Meeting – Wednesday 8th May 2019 6:30pm

1. Welcome and Apologies
2. Minutes of previous meeting
3. Matters Arising from Previous Meetings
 - Signatories: Marg to initiate change of signatories on IMB account
 - Playground Upgrade: Sign-off of ModuPlay contract and invoice payment
 - Outdoor Learning Space: Grant update
 - Library Refurbishment
 - Terri: Budget to monitor past and projected expenditure
 - Staff uniforms
4. GENERAL BUSINESS
 - P&C Mission: *What is the purpose/mission of the WPS P&C?*
Small group brainstorming activity
5. Correspondence
6. Reports
 - President's Report
 - Treasurer's Report
 - Principal's Report
 - Canteen Report
 - Uniform Shop Report
 - Fundraising Report
 - Working Bee Report
7. Other Business
 - Playground Upgrade design presentation (Andromeda Lembo)
 - P&C Logo proposition (Marg Nichols)
 - Insurance (Marg Nichols)
 - Timing of communication of events (Rebecca Griffith)
 - Ocean Plastic Patrol (Kris West)

Minutes from previous meetings, including reports presented are available on the school website:

<https://woonona-p.schools.nsw.gov.au/supporting-our-students/parents--carers-and-the-community/parents-and-citizens--association--p-c-/meeting-minutes.html>

Lost Property

My child has lost something at school. What happens to lost property and how can I minimise the chances of this happening again?

We understand how frustrating it is when your child loses something at school. Whilst lost property is the responsibility of parents and students, the school does what it can to ensure that lost property is returned to its owner.

For your information, the current lost property process is below. *** Please note new Location 2 ***

- **Lost property is put** in one of three locations within the school. Please check these or remind your child to do so.

Location 1: Gray St Entrance



Adjacent to 5/6 classrooms near Gray St entrance

Location 2: School Hall



NEW Outside School Hall (no longer kept in Infants, hall or OOSH)

Location 3: School Office



High value items (eg glasses & wallets) are held in the front office

- Towards the **end of each term**, a parent volunteer (assisted by student leaders) collects all lost property for sorting
 - Anything which is named is returned to the students
 - Any clothing items which are not named are washed and given to the uniform shop to sell.
 - Any non-clothing items (eg. water bottles, lunch boxes) are photographed, advertised on parent facebook page, and left in the lost property tubs for one week, then discarded or donated to charity
 - Any high value items are held in the school office until the end of the term.

Please remember, given that uniform items look the same it can be very easy for a child to mistake an item as their own and mistakes happen.

There are a number of ways you can **increase your chances** of having a lost item returned to you.

- Please make sure your child's name is clearly marked on their property. Put your name not only on the label of the item, but also somewhere inside the clothing.
- Iron on labels are the most effective way to make a name stand out. When a permanent marker is used on the blue fabric or the back of embroidery, the ink bleeds and is extremely hard to read. Adding the child's class to the label next to their name makes it easier to be returned.
- Check the lost property tubs yourself or remind your child to do so
- Please reiterate to your child to take care of their possessions and check that an item is theirs when they pick it up.
- If you find an item that doesn't belong to your child in your child's school bag, please return it promptly to the classroom teacher, the student who has lost it (if you know the student) or into a lost property tub.

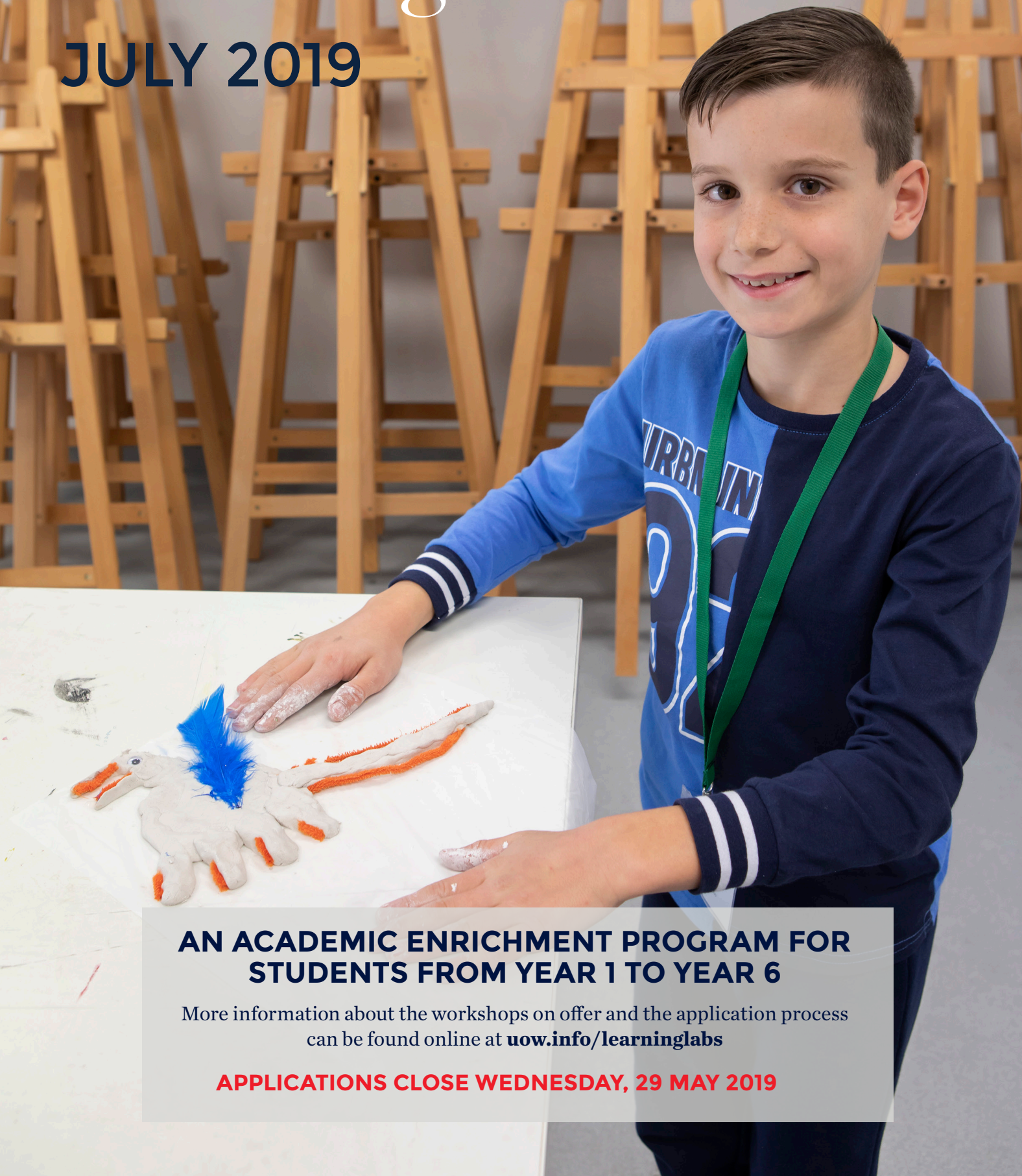
If you have any **questions or suggestions** about the lost property processes, please email enquiries@wppc.com.au



UNIVERSITY
OF WOLLONGONG
AUSTRALIA

Learning Labs

JULY 2019



AN ACADEMIC ENRICHMENT PROGRAM FOR STUDENTS FROM YEAR 1 TO YEAR 6

More information about the workshops on offer and the application process
can be found online at uow.info/learninglabs

APPLICATIONS CLOSE WEDNESDAY, 29 MAY 2019

LITTLE LEARNING LABS **(FOR YEARS 1 & 2 DURING 2019)**

WHEN: 8 and 9 July, 2019
WHERE: University of Wollongong
TIME: 9:00am - 2:00pm
FEE: \$155

LITTLE MINI-LABS **(FOR YEARS 1 & 2 DURING 2019)**

WHEN: 10 July, 2019
TIME: 9:00am - 3:00pm
FEE: \$85

Location and times are the same as above

EARLY LEARNING LABS **(FOR YEARS 3 TO 6 DURING 2019)**

WHEN: 16 and 17 July, 2019
WHERE: University of Wollongong
TIME: 9:00am - 3:30pm
FEE: \$165

EARLY MINI-LABS **(FOR YEARS 3 TO 6 DURING 2019)**

WHEN: 18 July, 2019
FEE: \$90

Location and times are the same as above



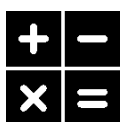
PROGRAM INFORMATION

Little and Early Learning Labs is an enrichment program designed for students who are excelling in their area of interest within their year group, and are seeking a challenging and fun experience during the school holidays.

All workshops are held over one (mini-labs) or two days, and are presented by teachers with specialist training or a specific interest in gifted education. There will be sponsorship places available for some participants- please see more details on how to apply for these places on the website.

WORKSHOPS ON OFFER- FULL LIST & WORKSHOP DESCRIPTIONS ONLINE

Learning Labs workshops cover a range of diverse and innovative disciplines that are designed to challenge and stimulate the interest of self-motivated and curious learners. Here are **some examples of what's coming up** in July:



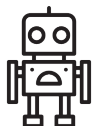
STEM Challenges

Do you enjoy solving problems and finding ways to improve designs? This workshop will be quite different to standard lessons at school. We will be learning how to apply Science, Technology, Engineering and Maths to the real-world.



Clay Cafe

Come join us at Clay Cafe where you get to develop your clay sculpting skills whilst creating any food (made completely out of air-dry clay!) your tastebuds desire. Warning: You may leave this workshop with an increased appetite!



Sphero Bolt Rockin' Rollin' Robots

Curious about coding? Ever wanted to learn to program your own robot? You will learn to write code and program a Sphero Bolt robot to overcome a series of individual challenges. Then, design programs and watch your robot compete in a variety of group competitions.



Stop Motion Animation

Why watch movies when you can make your own? Brainstorm ideas, create a storyboard, design your set and shoot your very own stop motion animation. We'll look at lighting, sound creation and green screens to make your animation come to life. Draw your characters, make them or build them – the choice is yours.

A full list of the available workshops to choose from will be posted on the website in April 2019 when applications open. Please note that the program books up quite quickly, so ensure you submit your application as early as possible.

APPLICATION & CONTACT DETAILS

For more detailed workshop descriptions, how to apply, FAQ's, and the online application form, please go to:
uow.info/learninglabs

For all other enquiries, please contact the Learning Labs team via:

E: learning-labs@uow.edu.au

P: (02) 4221 5557

Facebook: www.facebook.com/UOWOandP

APPLICATIONS CLOSE WEDNESDAY, 29 MAY 2019

FLARE FOOTBALL TERM PROGRAM

29 APRIL - 5 JULY (TERM 2)

FORMERLY REFERRED TO AS THE FSC ACADEMY



ALBION PARK
Terry Reserve
Thursday

BALGOWNIE
Judy Masters Oval
Monday

WOONONA
Woonona HS
Wednesday

KEMBLA GRANGE
Ian McLennan Park
Wednesday
(GOALKEEPING)

REGISTER NOW

www.footballsouthcoast.com
0242 856929



WOLLONGONG'S NORTHERN ABORIGINAL, MAORI & PUKAPUKA COMMUNITIES INVITE YOU TO OUR:

SOUTH SEA CELEBRATION

Come and share music, dance, language, weaving & poi.
All welcome!

BYO picnic and musical instruments
For more info contact richcath@tpg.com.au



19 • MAY • 2019
12-3PM
Bellambi Surf Club



WOLLONGONG NORTHERN ILLAWARRA ABORIGINAL COMMUNITY
NGA HAU E WHA WOLLONGONG
PUKAPUKA COMMUNITY OF WOLLONGONG

Supported by
wollongong
city of innovation

OPEN TO ALL AGES
\$6 CASUAL SESSION, \$40 PER TERM

CHESS

STARTING TERM 2

PCYC
WOLLONGONG

10AM TO 4PM
★ FREE ★
ADMISSION
Like us on Facebook

WOLLONGONG CITY LIBRARIES PRESENTS

COMIC GONG

SATURDAY 11 MAY 2019
WOLLONGONG'S ORIGINAL POP CULTURE FESTIVAL

WWW.WOLLONGONG.NSW.GOV.AU/LIBRARY